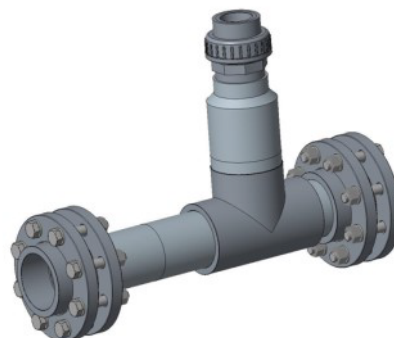


► High capacity Ejectors M 340 C, M 350 C

- **Capacity: up to 200 kg/h**
- Safe vacuum generation
- Integrated check valve



GENERAL

The high capacity ejectors series M 340 C and M 350 C are designed to feed larger amounts of gas chlorine into the water. They are working on the venturi principle to create a vacuum required for vacuum regulator operation.

The high capacity ejectors series M 340 C and M 350 C are composed of:

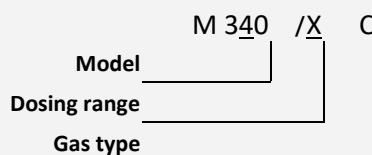
- nozzle with inlet water connection
- basic body with venturi pipe and
- mixing chamber
- check valve with vacuum pipe connection
- diffuser with outlet water connection

OPERATION PRINCIPLE

Water is taken from the main pipe to the booster pump where necessary pressure is added so the water can be pushed through the corresponding venturi where the required vacuum is achieved. To prevent water inlet into the system, ejector is equipped with the check valve.



ORDER CODES



OPTIONS:

- **Model: 340** for dosing range up to 40kg
350 for dosing range up to 200kg
- **Gas type: "C"** - Cl₂, **"CO2"** - CO₂, **"S"** - SO₂, **"N"** - NH₃
- **Dosing range (kg/h):**

M 340

20 up to 20

40 up to 40

M 350

60 up to 60

80 up to 80

120 up to 120

160 up to 160

200 up to 200

TECHNICAL DATA



Weight :

M 340: 4,5 kg

M 350: 6 kg

Dimensions :

M 340: 402 x 283 x 165 mm

M 350: 402 x 339 x 165 mm

Connections

M 340 Water inlet - Water outlet - Vacuum connections

20 - DN50 DN50 d20/d25/d32/d40

40 - DN50 DN50 d20/d25/d32/d40

M 350 Water inlet - Water outlet - Vacuum connections

60 - DN80 DN80 d50 PVC Union

80 - DN80 DN80 d50 PVC Union

120 - DN80 DN80 d50 PVC Union

Options:

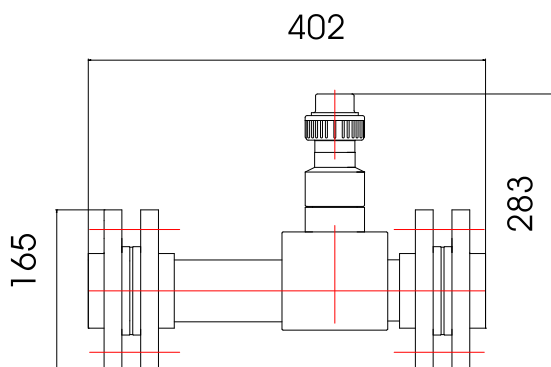
Connections for 160 and 200 kg are subject to specific project.

Other connections on request!

MEASURE DRAWINGS



Ejector up to 40 kg/h



Ejector up to 120 kg/h

