



# FK-KE SERIES

Self Priming Centrifugal Pump





# GENERAL INFORMATION

Discharge Flange	4" - 12"
Capacity	Up to 840 m³/h
Head	UP to 40 m
Frequency	Three Phase 50 Hz - 60 Hz*
Maximum Operating Pressure	Up to 10 bar



## Transferable Liquids

- The impellers are open and have two blades and can pump solid particles up to 76 mm (3") depending on the pump size.



## Shaft Sealing

- Mechanical seal is used in standard production.
- It is possible to use soft packing depending on the customer's request or the type of liquid.



## Applications

Domestic and industrial raw sewage liquid transfer
Sewage treatment plants
Liquid transfer containing sludge and solids
Factory waste water drain
All kinds of drainage operations

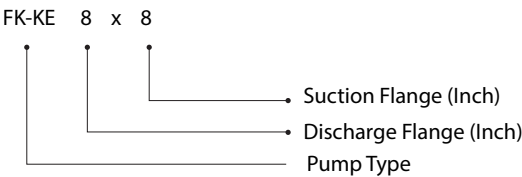


## Design Features

- FK-KE series pumps are self-priming, flap centrifugal pumps.
- Since they're self-priming, it's sufficient if the pump is above the wall where the pump will be suction, and only the suction installation is in the well.
- It's possible to operate with a diesel engine or electric motor through the elastic coupling.
- FK-KE series consists of 5 different types: 4", 6", 8", 10", 12".
- The impellers are open and have two blades and can pump solid particles up to 76 mm (3") depending on the pump size.
- It's very easy to clear the blockage. The front removable suction cover facilitates access to the impeller, stuffing box and mechanical seal. It's very easy to remove the blockage without any action in the suction and discharge installation.



## Pump Code





## DESCRIPTIONS



DIN



EN



AISI/SAE/ASTM

Cast Iron	0.6025	EN-GJL-250 (GG25)	A48 CLASS 40B
Ductile Iron Casting	0.7040	EN-GJS-400-15 (GGG 40)	A536 60-40-18
Ductile Iron Casting	0.7043	EN-GJS-400-18-LT (GGG40.3)	A536 60-40-18
Steel Casting	1.0619	GP240GHGS-C25	A216 WCB
Chrome Nickel Steel Casting	1.4308	GX5CrNi19-10	A351 CF8
Chrome Nickel Steel Casting (Low Carbon)	1.4309	GX2CrNi19-11	A351 CF3
Chrome Nickel Molybdenum Steel Casting	1.4408	GX5CrNiMo19-11-2	A351 CF8M
Chrome Nickel Molybdenum Steel Casting (L.C)	1.4409	GX2CrNiMo 19-11-2	A351 CF3M
Austenitic Steel Casting	1.4500	GX7NiCrMoCuNb 25-20	A351 CN7M
Austenitic Ferritic Steel Casting (Duplex)	1.4517	GX2CrNiMoCuN 25-6-3-3	A890 CD4MCuN
Austenitic Ferritic Steel Casting (S.Duplex)	1.4469	GX2CrNiMoN 26-7-4	A890 CE3MN
Martensitic Stainless Steel Casting	1.4317	GX4CrNi 13-4	A352 CA6NM
Martensitic Stainless Steel Casting	1.4008	GX7CrNiMo 12-1	A217 CA15
Bronze Casting ( Tinned)	2.1050.01	G-CuSn10	B427 C90700
Bronze Casting (Nickel Alloy)	2.0975.01	G-CuAl10Ni	B148 C95500
Bronze Casting (Leaded)	2.1096.01	G-CuSn5ZnPb	B584 C83600
Chromium Steel	1.4021	X20Cr13	A276 Type 420
Chromium Steel (Heat Treatment)	1.4021	X20Cr13	A276 Type 420+QT
Chrome Nickel Steel	1.4301	X5CrNi 18-10	A276 Type 304
Chrome Nickel Molybdenum Steel (L.Carbon)	1.4404	X2CrNiMo 17-12-2	A276 Type 316L
Duplex (Austenitic Ferritic) Steel	1.4460	X3CrNiMoN 27-5-2	AISI 329
Duplex ( Austenitic Ferritic) Steel	1.4462	X2CrNiMoN 22-5-3	UNS S32205
Ductile Iron Casting	0.7050	EN-GJS-500-7-LT (GGG 50)	A536 70-50-05



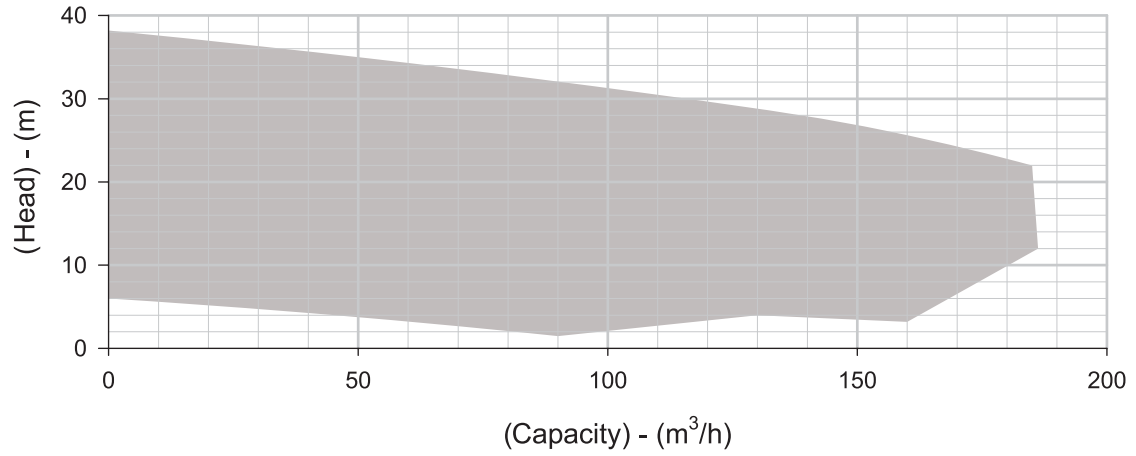
[www.wgpumps.com](http://www.wgpumps.com)



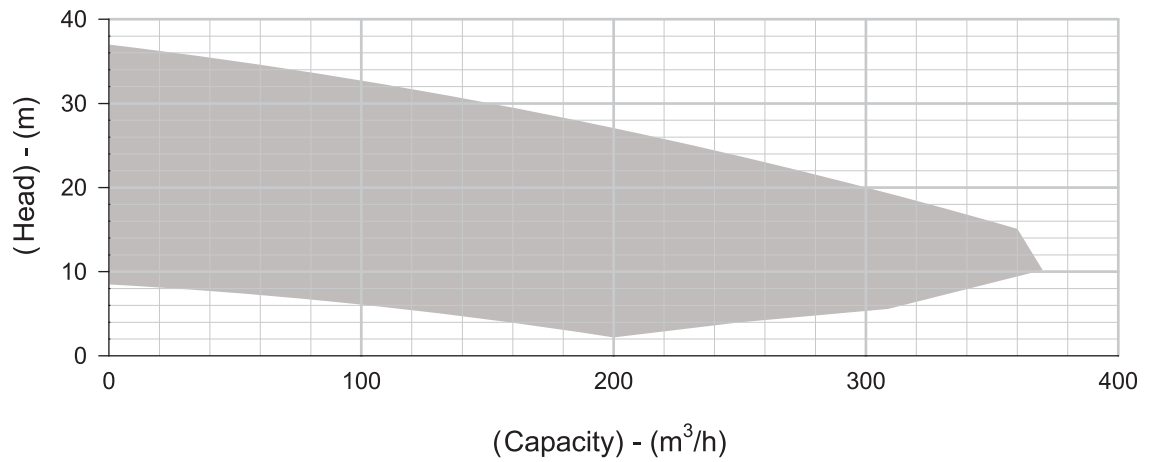
## SELECTION CHARTS



FK-KE 4x4

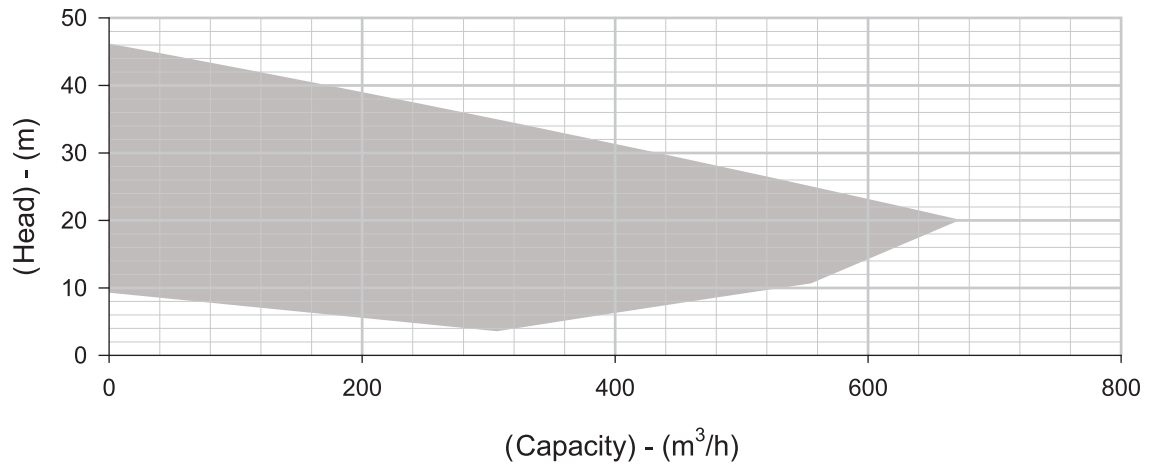


FK-KE 6x6

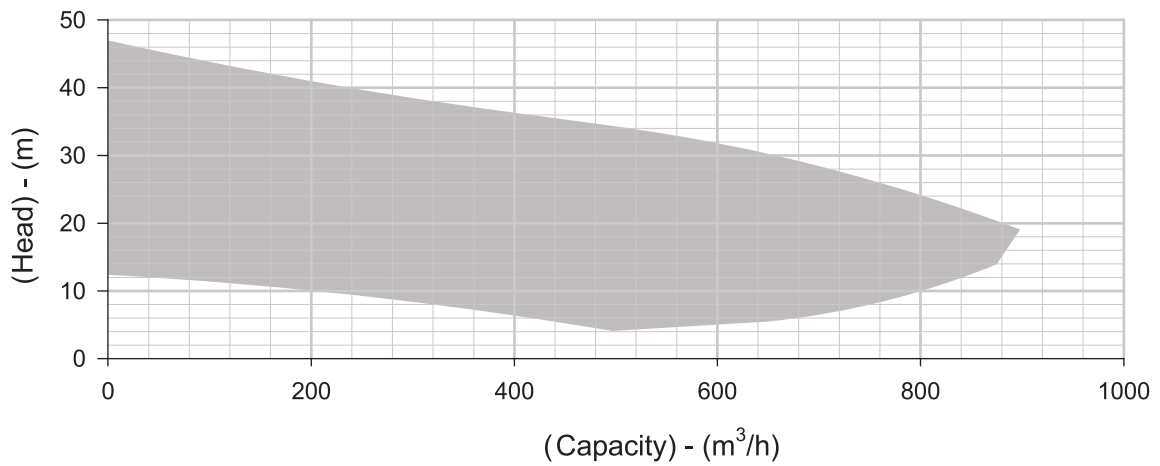


## SELECTION CHARTS

### FK-KE 8x8



### FK-KE 10x10



### FK-KE 12x12

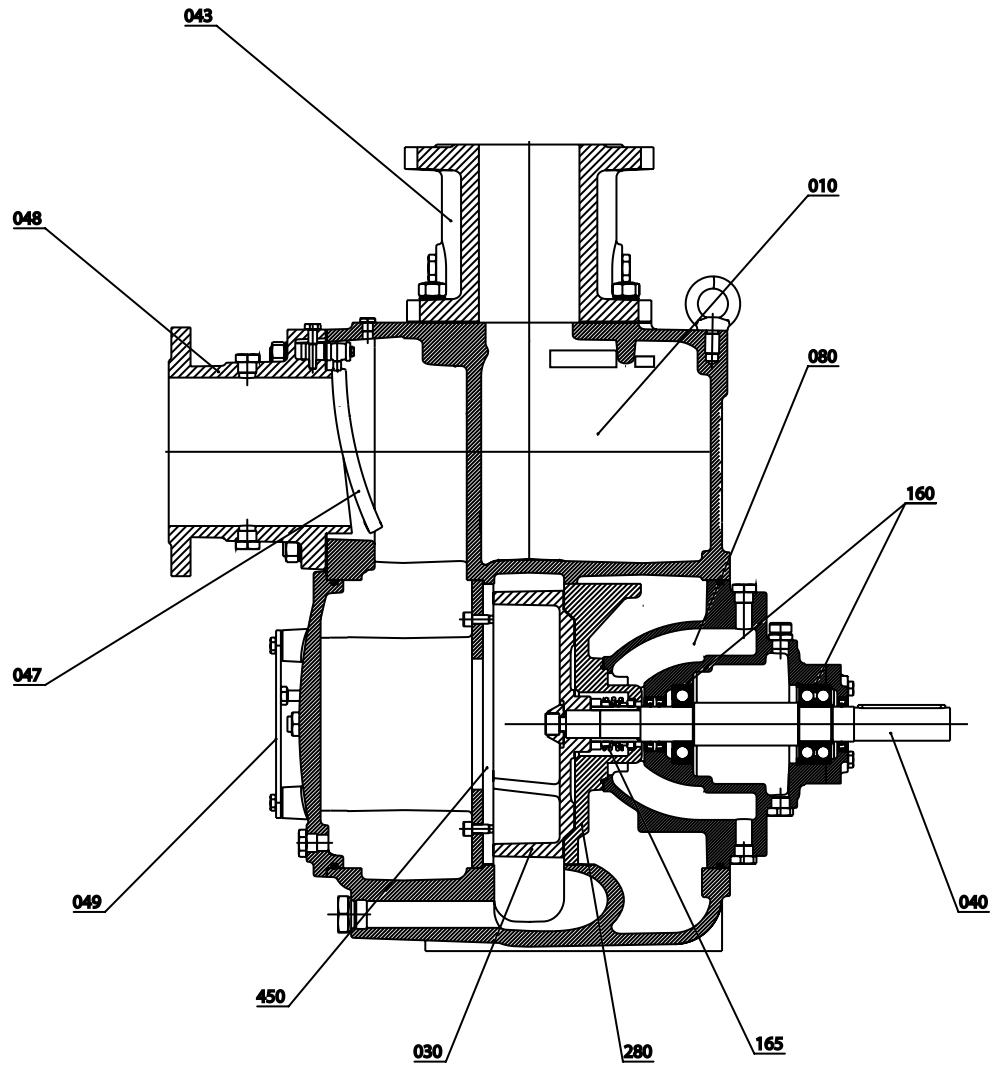
"Under Developing"





# SECTIONAL VIEW

FK-KE 4x4 6x6 8x8



## Part List

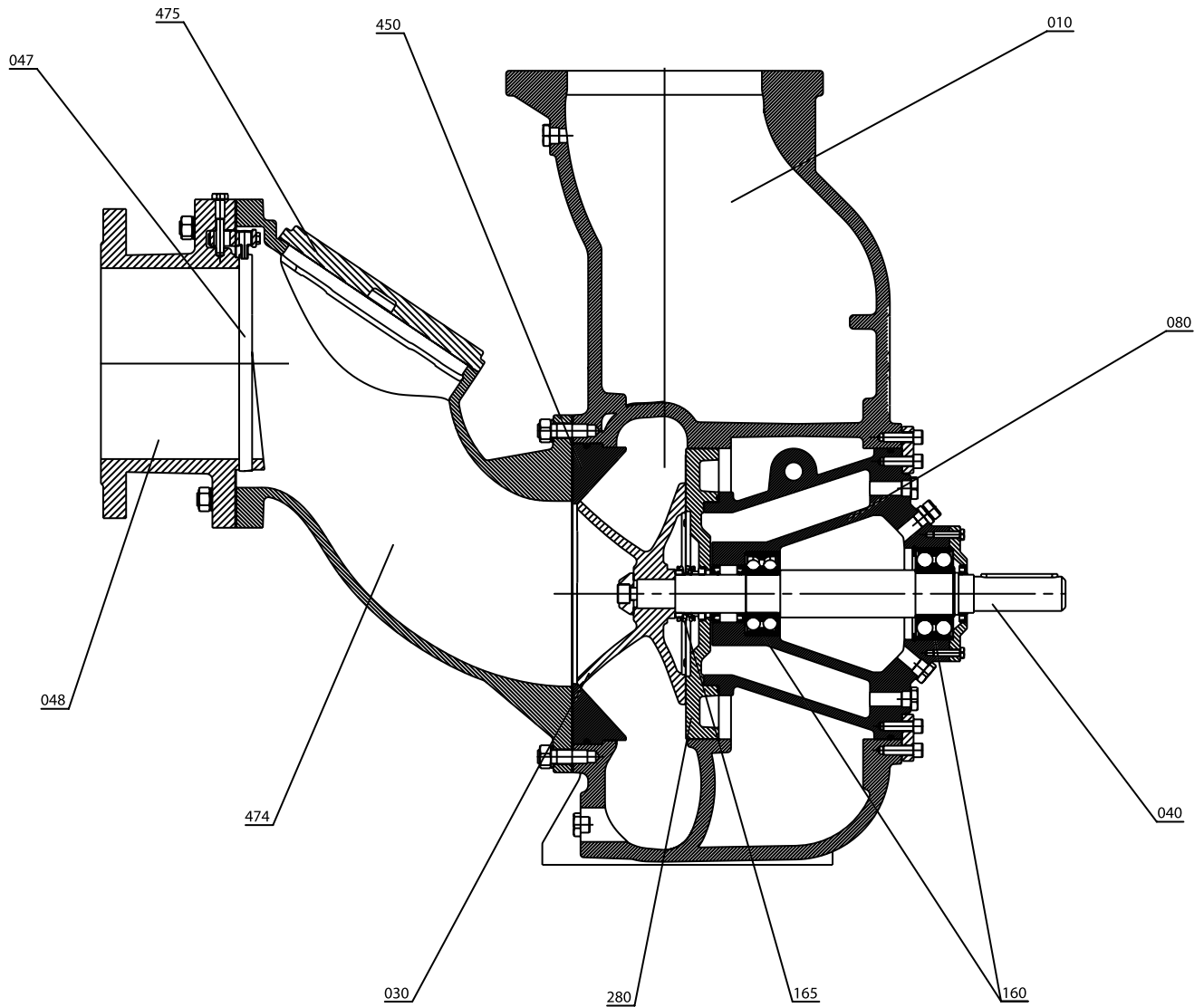
Shaft	040
Mechanical Seal	165
Impeller	030
Wear Plate	450
Cover Carrying Plate	049
Flap	047
Suction Flange	048
Discharge Flange	043
Volute Casing	010
Bearing Housing	080
Bearing	160





## SECTIONAL VIEW

### FK-KE 10x10



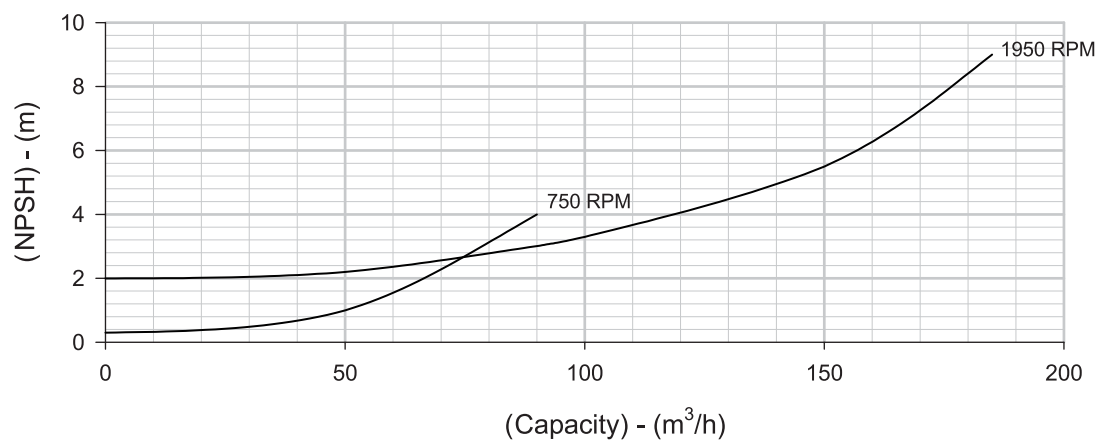
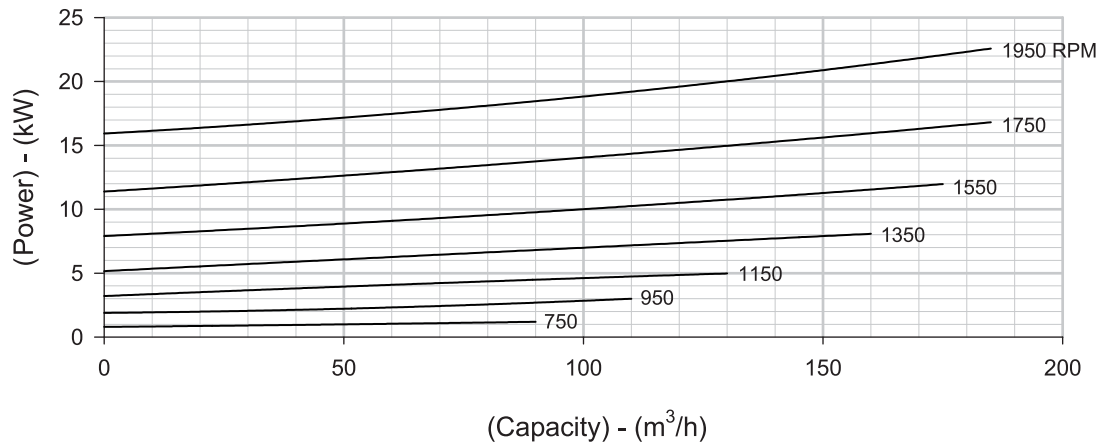
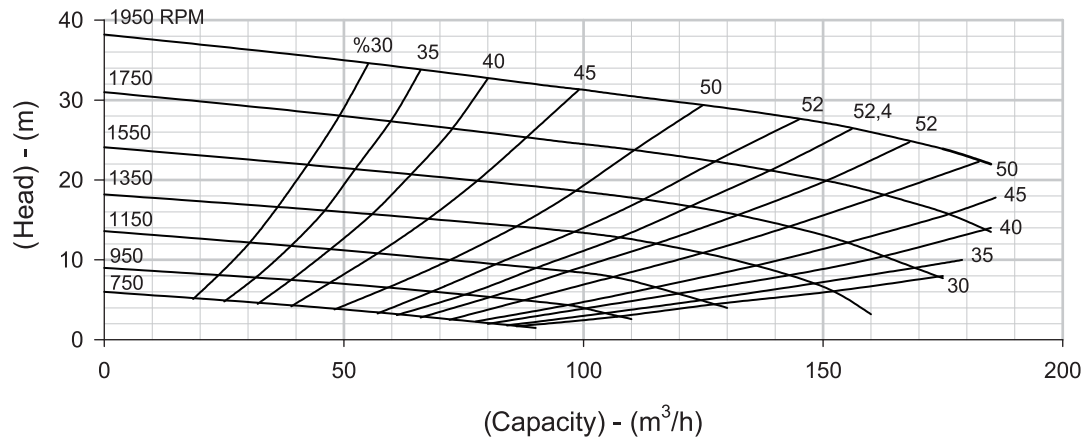
### Part List

Shaft	040
Mechanical Seal	165
Stuffing Box	280
Impeller	030
Wear Plate	450
Flap	047
Suction Flange	048
Inlet Elbow	474
Inlet Elbow Cover	475
Volute Casing	010
Bearing Housing	080
Bearing	160



## SELECTION CHARTS

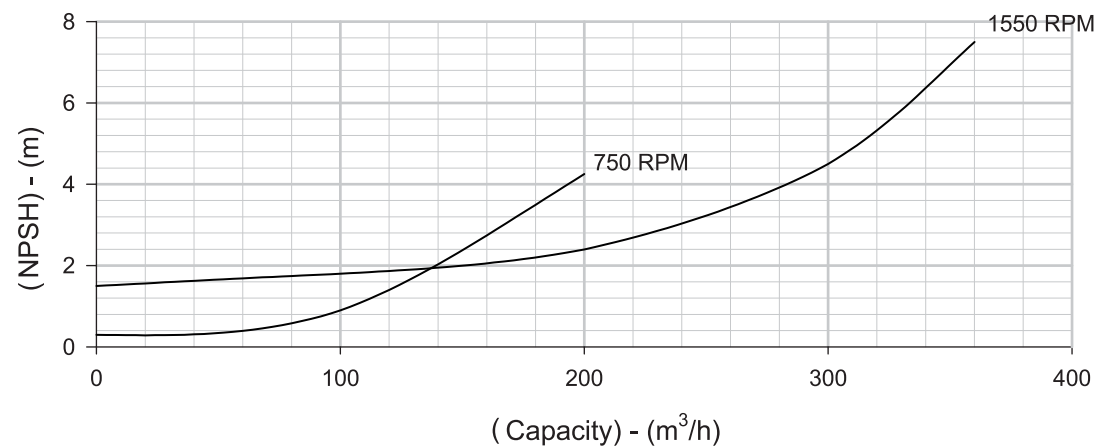
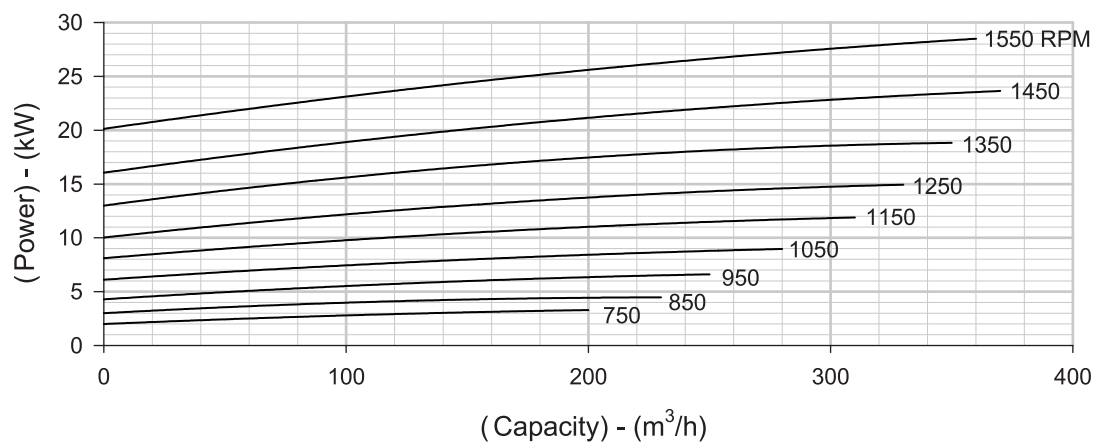
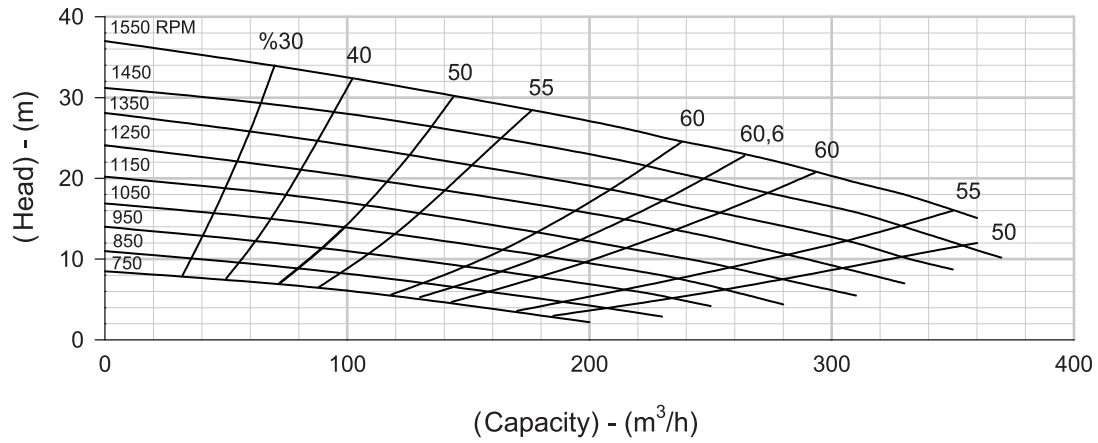
### FK-KE 4x4





## SELECTION CHARTS

### FK-KE 6x6

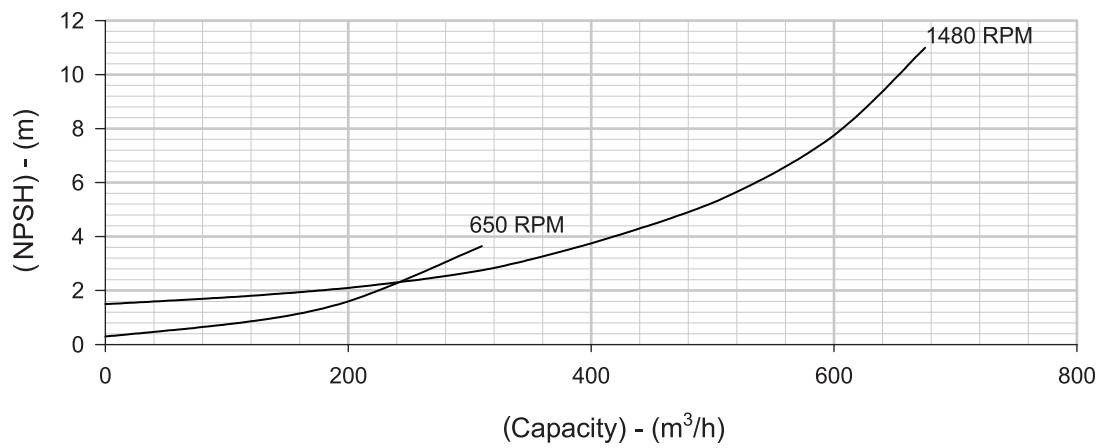
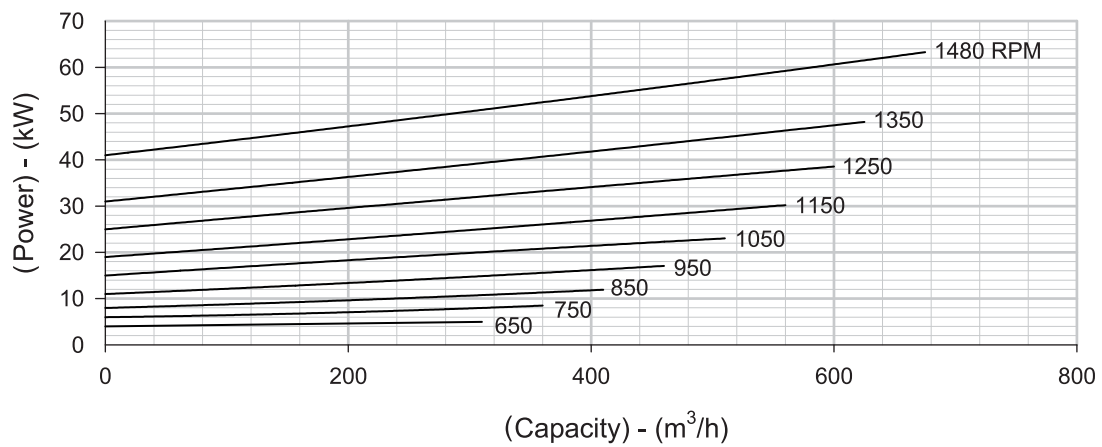
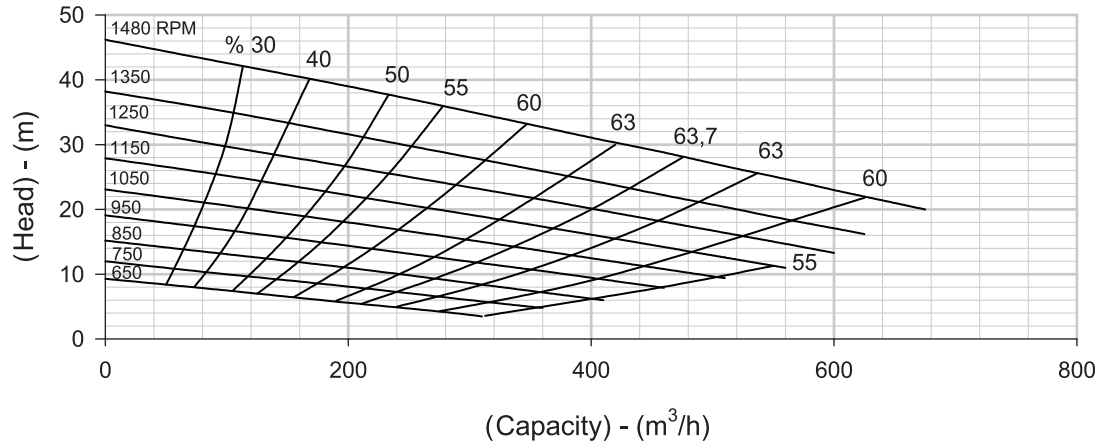




## SELECTION CHARTS

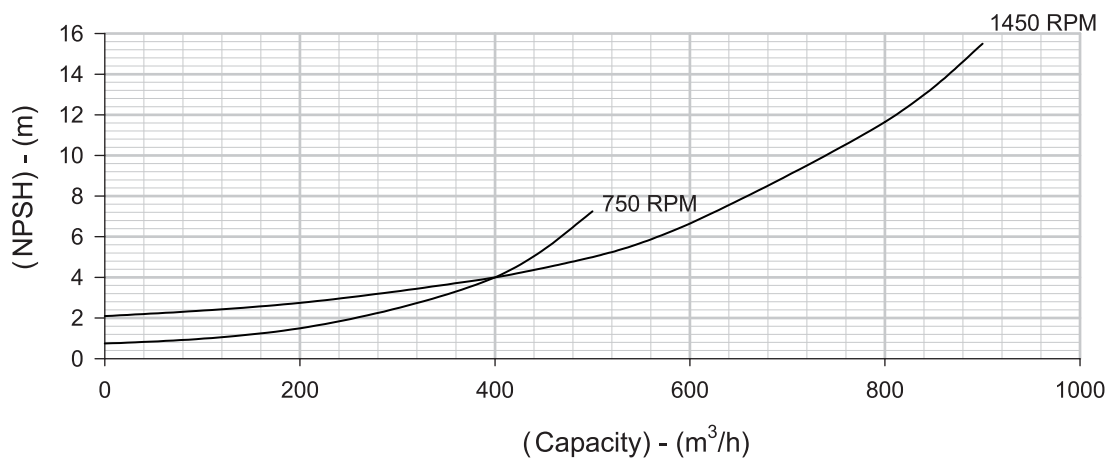
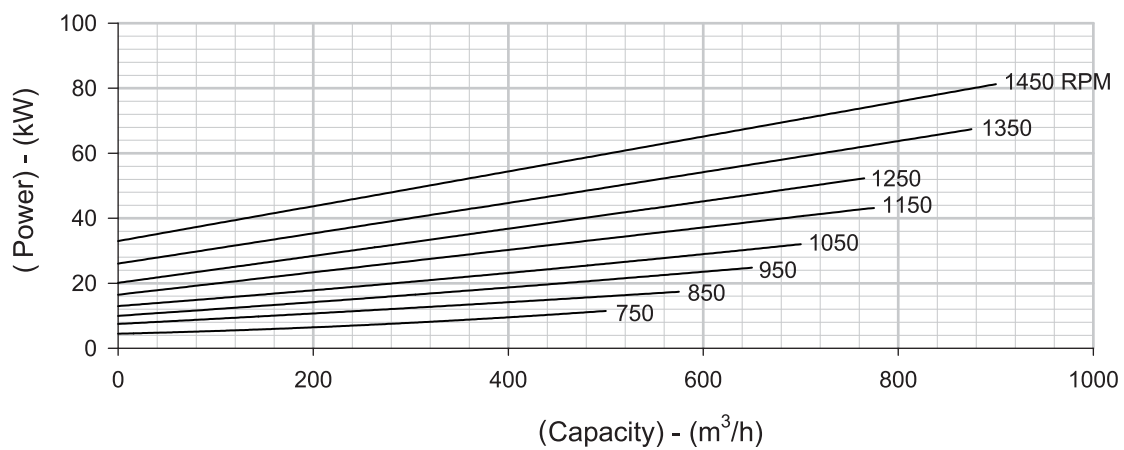
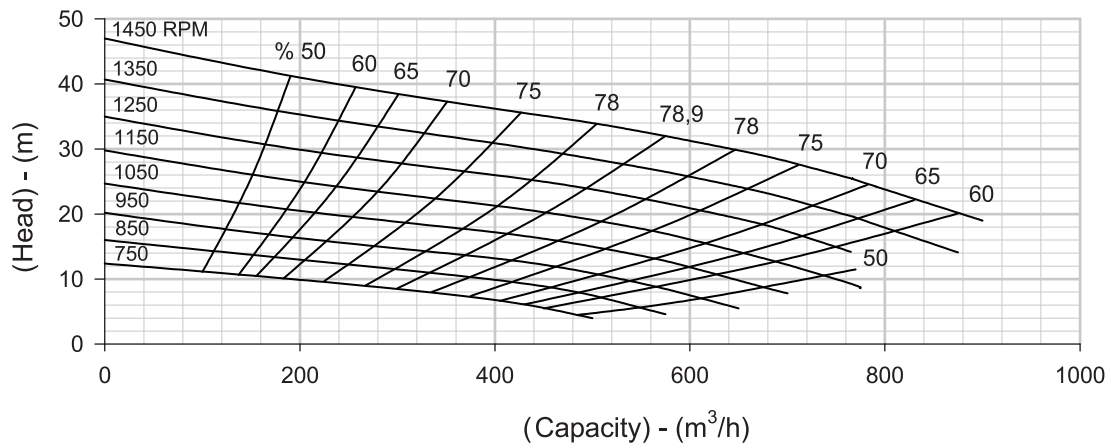


FK-KE 8x8



## SELECTION CHARTS

### FK-KE 10x10



### FK-KE 12x12 \*Under Developing\*

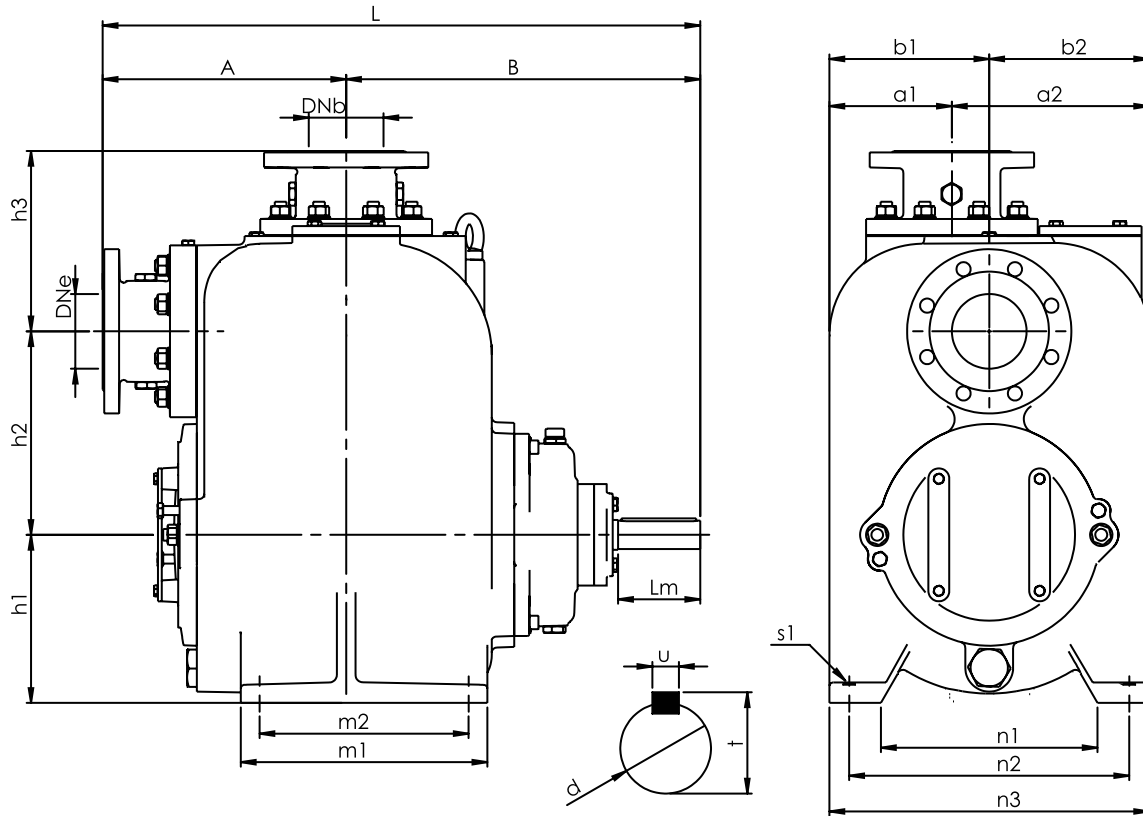




## PUMP DIMENSIONS



FK-KE 4x4 6x6 8x8



Pump Type	Dimensions (mm)																						Weight  (kg)
	Outside Dimensions								Supporting Foot Dimensions										Shaft Dimensions				
	DNe	DNb	A	B	L	h1	h2	h3	a1	a2	b1	b2	n1	n2	n3	m1	m2	s1	d	Lm	t	u	
FK-KE 4x4	100	100	326	474	800	225	273	242	164	264	214	214	428	375	290	330	280	18	38	110	41	10	255
FK-KE 6x6	150	150	413	482	895	260	312	352	231	356	294	294	423	520	585	340	280	18	38	110	41	10	395
FK-KE 8x8	200	200	423	559	982	335	328	328	358	358	358	358	549	630	717	385	305	22	45	120	48,5	14	666

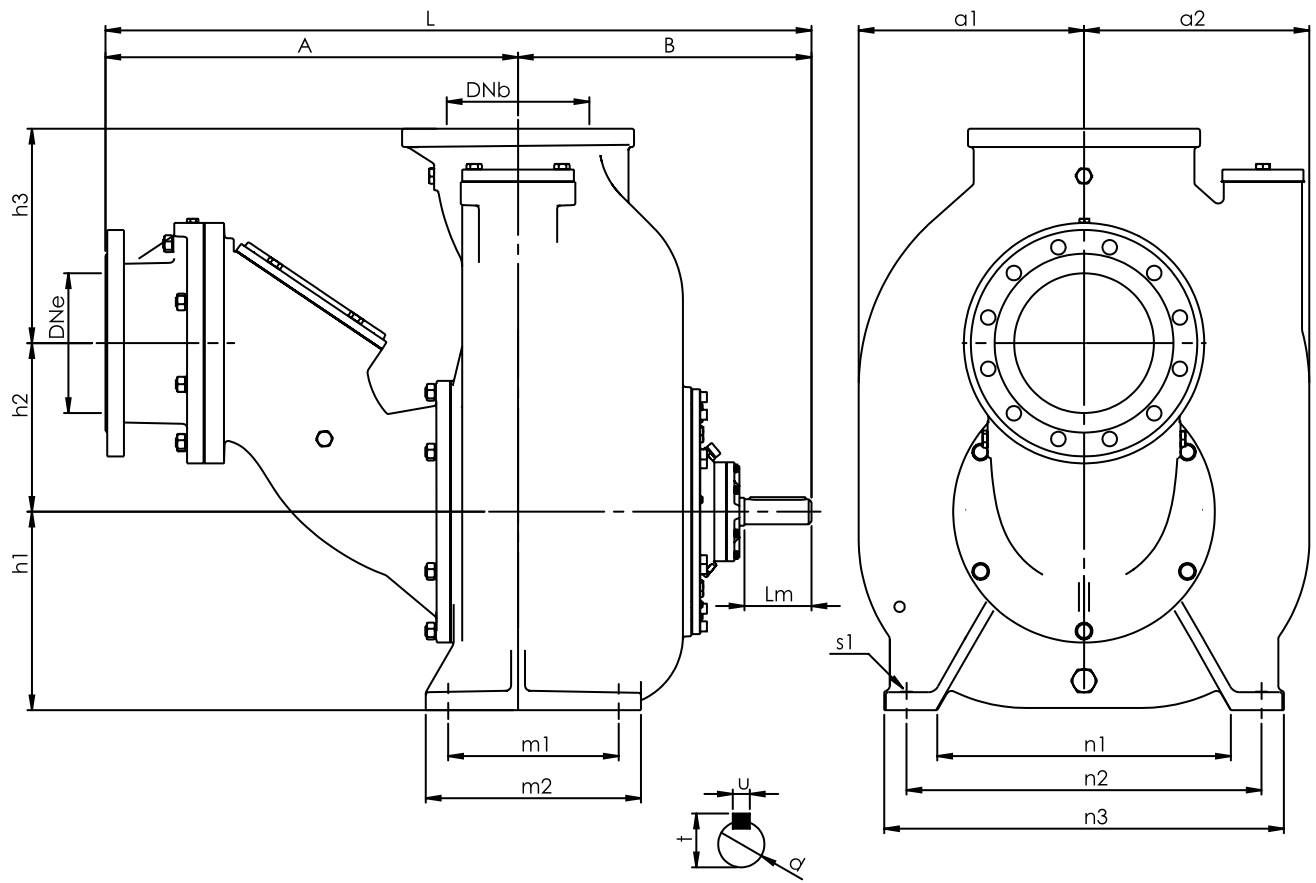




# PUMP DIMENSIONS



## FK-KE 10x10



Pump Type	Dimensions																			Weight (kg)	
	Outside Dimensions								Supporting Foot Dimensions							Shaft Dimensions					
	DNe	DNb	A	B	L	h1	h2	h3	a1	a2	n1	n2	n3	m1	m2	s1	d	Lm	t		u
FK-KE 10x10	250	250	738	525	1263	355	302	384	403	403	525	635	715	305	385	22	45	120	48,5	14	742

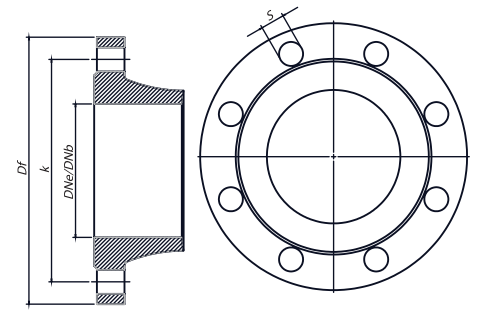




## FLANGE DIMENSIONS

Pump Type	DNe / DNb	PN	Suction & Discharge			
			Df	k	s	n
TKF-KE 4x4	100	16	220	180	19	8
TKF-KE 6x6	150	16	285	240	23	8
TKF-KE 8x8	200	10	340	295	23	8
TKF-KE 10x10	250	16	405	355	28	12

○ TS EN 1092 - 2    ○ "n" Number of Holes



## SEAL SOLUTIONS

Packing Type	Packing Specifications	
	Temperature	Pressure
MG1	t = -20 °C ... +85 °C t = +85 °C ... +100 °C (*)	p1 = 16 bar (230 PSI) p1 = 16 bar (230 PSI) (*)
H12N	t = +100 °C ... +140 °C	p1 = 25 bar (363 PSI)
M7N	t = -20 °C ... +220 °C	p1 = 25 bar (363 PSI)
Soft Packing	t = -20 °C ... +100 °C	p1 = 10 bar (145 PSI)
	t = -20 °C ... +140 °C (*)	p1 = 25 bar (230 PSI) (*)
CARTEX - DN	t = -20 °C ... +220 °C	p1 = 25 bar (363 PSI)

○ (\*) Optional

\*Note: Above datas mentioned according to BURGMANN Brand.  
Packing can be changed according to customer request.

\*Different seal application can be used according to liquid specification.

